

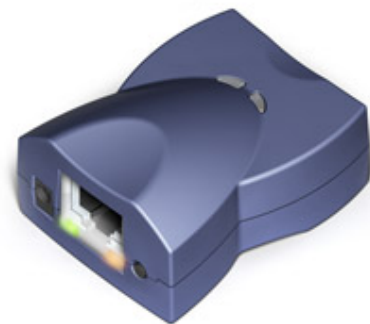
DS203 Serial Device Server & BASIC-programmable Controller

Introduction

The DS203 is a dual-use device: depending on the loaded firmware it can work as a fixed-function, ready-to-run serial device server or BASIC-programmable controller*.

As a serial device server, the DS203 allows you to quickly network-enable practically any serial device or system.

As a BASIC-programmable controller, the DS203 offers a low-cost, rapid development alternative to expensive and complex computing platforms, such as LINUX-based boards.



Hardware Features

- Stylish and very compact, external dimensions only **60x47x30mm**.
- Extended power supply range: **10-25VDC**.
- One 10/100BaseT, **auto-MDIX** Ethernet port.
- One RS232 serial port (TX, RX, RTS, CTS, DTR, DSR).
- Four LEDs display status information.
- Firmware is upgradeable through the serial port or network.
- [DS203-KIT Starter Kit](#) available.
- CE- and FCC-approved.

Serial Device Server Features

- RTS, CTS, DTR, and DSR lines can be used as remotely controlled I/O.
- 8KB data buffers (one in each direction).
- Onboard EEPROM stores user-configurable parameters (settings).
- Setup through the serial port or network (UDP commands or Telnet session).
- Over-the-network IP address configuration.
- "On-the-fly" serial port control commands.
- Serial-side commands to control network connections.
- Direct control of ADSL modems.
- Supported network protocols include UDP, TCP, ARP, ICMP (PING), DHCP, PPPoE, and LCP.
- Supplied with the [Device Server Toolkit \(DST\)](#) for *Windows*. The DST includes [Virtual Serial Port Driver \(VSPD\)](#), a.k.a. "COM redirector". A [LINUX version](#) of the VSPD is also available.

BASIC-programmable Controller Features

- Executes your Tibbo BASIC application.
- **Absolute flexibility** - think of your device as a miniature computing platform.
- Supplied with [TIDE](#) (Tibbo IDE) featuring built-in debugger.
- Integrated web server supports dynamic content generation.
- Numerous high-level objects speed up and simplify coding. Available objects include:
 - **Sock**- up to 16 simultaneous TCP or UDP connections;
 - **Ser**- UART communications;
 - **Io**- control serial port lines;
 - **Stor**- read to and write from the EEPROM;
 - **Romfile**- add static (ROM) data to your project;
 - And [more](#)...

* Please specify DS203-P on your order if you wish to receive the DS203 in BASIC-programmable controller configuration.

Theta Sales & Service.

309, 3rd Floor, "The Pentagon", Next to Satara Road Telephone Exchange,
Off Pune-Satara Road, Pune - 411 005. INDIA

Ph: +91-20-6603 2910 / 3048 4190. Fax: 2422 2201.

Email: info@thetasales.com / sales@thetasales.com Website: www.thetasales.com